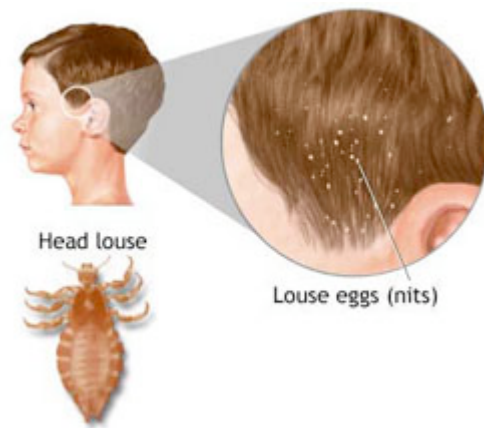


## FREQUENTLY ASKED QUESTIONS - General Questions



### What are Head Lice?

Head lice are tiny flesh-colored insects. Most are between 1mm and 2mm long. They live on human scalps and feed by sucking blood. Lice stay close to the scalp. They cannot jump, hop or fly but are passed from person to person by head to head contact.



### Checking for Lice

Proper detection is vital to prevention. It's a good idea to check your children's hair at least once a week. Use a fine tooth detection comb and work in a brightly lit area. Look for live nits and eggs. The eggs are small, dull and well camouflaged. They will attach to the hair close to the scalp. Empty shells (nits) are white and shiny and are found further along the hair shaft.

### If You Find Head Lice

Call your local pharmacist and ask for the best treatment for your family. As lice are becoming more resistant to over-the-counter treatments, he/she will know the newest treatments available.

If you do not want to use chemicals/pesticides please try **Fairy Tales Lice Good-Bye** - our all natural non-toxic lice removal system. Our mousse has been shown to dissolve nit glue to make the combing process easier and more efficient.

If you choose to use a chemical based product follow instructions carefully. Do not apply a second treatment or leave on the head for longer than recommended. Combing out the head lice is a long, arduous process but is the safest and most effective. Remember to check all family members and treat everyone at the same time to prevent re-infestation.

### To Prevent Head Lice

Rosemary Repel Hair Care has been shown to prevent head lice. After all the lice are gone, the use of Rosemary Repel Hair Care is a safe and effective way to prevent re-

infestation. For centuries, rosemary oil has been shown to prevent head lice - it was even used during the Crusades! Fairy Tales Hair Care uses only the purest oils of rosemary, tea tree, lemongrass, citronella and lavender to help repel lice and other insects from the hair.

Follow our instruction guide for maximum prevention.

Information provided by:

<http://www.fairytaleshairecare.com/content/faqs.asp>